



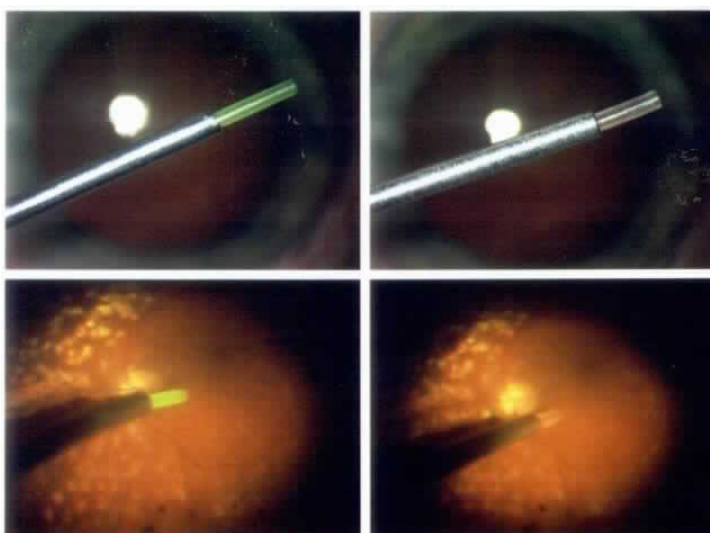
# IRIDEX

## NEW GreenTip™ Soft Tip Cannula Now valved cannula compatible



GreenTip

Clear Silicone Tip



### Gain More Control with Better Visualization

- Patented green tip design maximizes visualization against retina
- Easy insertion and improved fit for valved cannulas
- Atraumatic silicone tip protects the retina during aspiration and subretinal fluid drainage
- Tip design maximizes flow
- Available in:
  - 23Ga x 0.5mm (PN# I5860)
  - 25Ga x 0.5mm (PN# I5870)